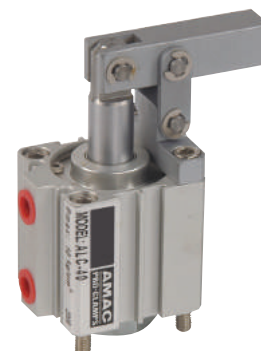
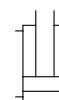


## 5107# ALC 槓桿式空壓缸 Air lever-type Cylinder

### 產品簡介

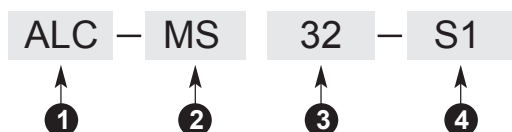
- 此型式空壓缸，採用標準規格化治具缸，加裝槓桿式夾持機構，活塞推出為夾緊狀態，主要機構零件安裝於缸體外部，易於維護。
- 缸體材質採用鋁合金，內壁表面光滑，使用壽命長，夾持機構材料均採用機械構造用炭素鋼，堅固耐用。
- 本系列各種型號均可安裝磁性感應。



### Product Introduction

- The series of air cylinder employs the standardized jig cylinder and fitted with lever type clamping mechanism. Piston push forward for clamping. Major parts are mounted outside of the cylinder barrel for convenient maintenance.
- The cylinder barrel is manufactured from aluminum alloy, featuring smooth internal surface and long service life. Clamping mechanism is manufactured from structural carbon steel for maximum durability and long service life.
- All models in this series are available to equip with magnetic proximity switch.

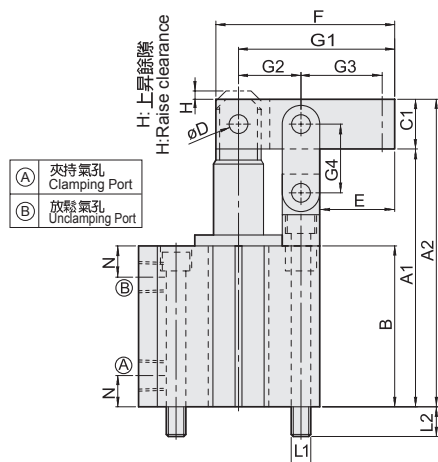
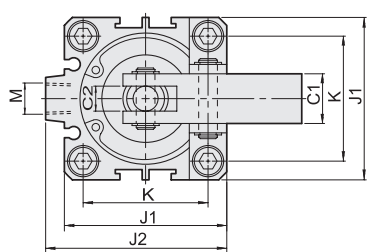
### 訂購標示法 Ordering Code



①	系列別 Series	ALC
②	空白 Blank	標準型 Standard type
	MS	附磁石感應 With magnetic induction
③	氣缸內徑 Bore of cylinder	φ25. φ32. φ40. φ50. φ63
④	近接開關 Sensor switch	S1:1個 S2:2個 1Pc of S1,2Pcs of S2

### 特性資料 Specifications

氣缸內徑	Bore of cylinder	mm	φ25	φ32	φ40	φ50	φ63
活塞桿徑	Piston rod diameter	mm	φ10	φ16	φ16	φ20	φ20
總行程	Total stroke	mm	20	23	25	30	35
受壓面積	Pressure area	cm <sup>2</sup>	4.91	8.04	12.57	19.63	31.17
理論夾持力	Theoretical clamping	6kg/cm <sup>2</sup>	15	25	44	71	136
使用流體	Fluid		已壓縮之壓縮空氣 Filtered air				
最大操作壓力	Max operation pressure		10 kg/cm <sup>2</sup>				
操作壓力範圍	Operation pressure range		1-7 kg/cm <sup>2</sup>				
動作方式	Acting type		複動式 Double acting				



Item	Model	ALC-25	ALC-32	ALC-40	ALC-50	ALC-63
標準型 Standard type	A1	65.5	78	82.5	96.6	115.5
	A2	78.2	93.9	98.4	115.6	137.7
	B	41	49	51.5	58.6	72.5
附磁石 With magnet	A1	75.5	93	97.5	106.6	125.5
	A2	88.2	108.9	113.4	125.6	147.7
	B	51	64	66.5	68.6	82.5
C1		φ 12.7	φ 15.9	φ 15.9	φ 19	φ 22.2
C2		6	8	8	10	10
D		φ 5	φ 6	φ 6	φ 8	φ 8
E		25	31	32	35	38.5
F		50	60	65	75	85
G1		45	54	58	66	76
G2		14	17	20	23	29.5
G3		27.5	33	34	38	40.5
G4		17	20	22	27	32
H		3	3	3	3	3
J1		40	44	52	62	75
J2		-	50	58	71	84.5
K		28	34	40	48	60
L1		M5×0.8	M5×0.8	M6×1.0	M6×1.0	M6×1.0
L2		10.5	11	9.5	11	11
M		M5×0.8	PT1/8	PT1/8	PT1/4	PT1/4
N		8	9	10	11	11