

5108# HLC 槓桿式油壓缸 Hydraulic lever-type Cylinder

產品簡介

- 此型式油壓缸，夾持機構為槓桿原理，活塞推出為夾緊狀態，主要機構零件安裝於缸體外部，易於維護。
- 缸體及夾持機構材料均採用機械構造用炭素鋼，堅固耐用，使用壽命長。



Product Introduction

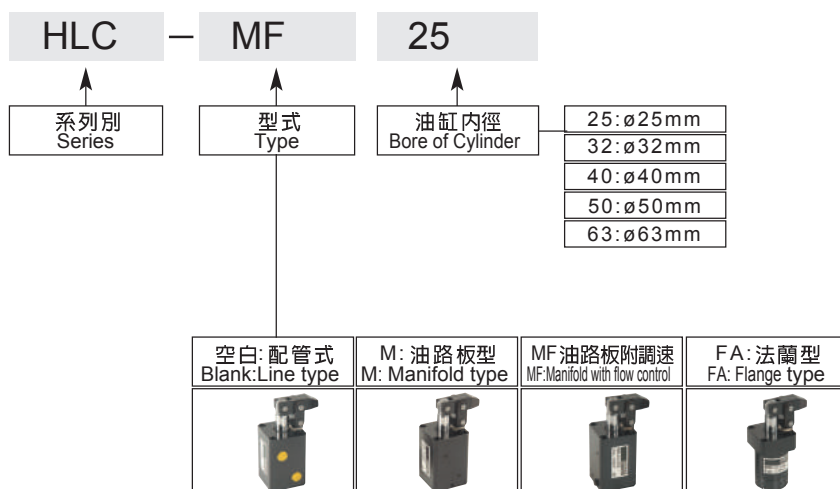
- The clamping mechanism on this series of hydraulic cylinder work with a lever principle. Piston push forward for clamping. It provides greater clamping force than that of swing clamp cylinder. Major parts are mounted outside of the cylinder barrel for convenient maintenance.
- The cylinder barrel and clamping mechanism are manufactured from structural carbon steel for maximum durability and long service life.



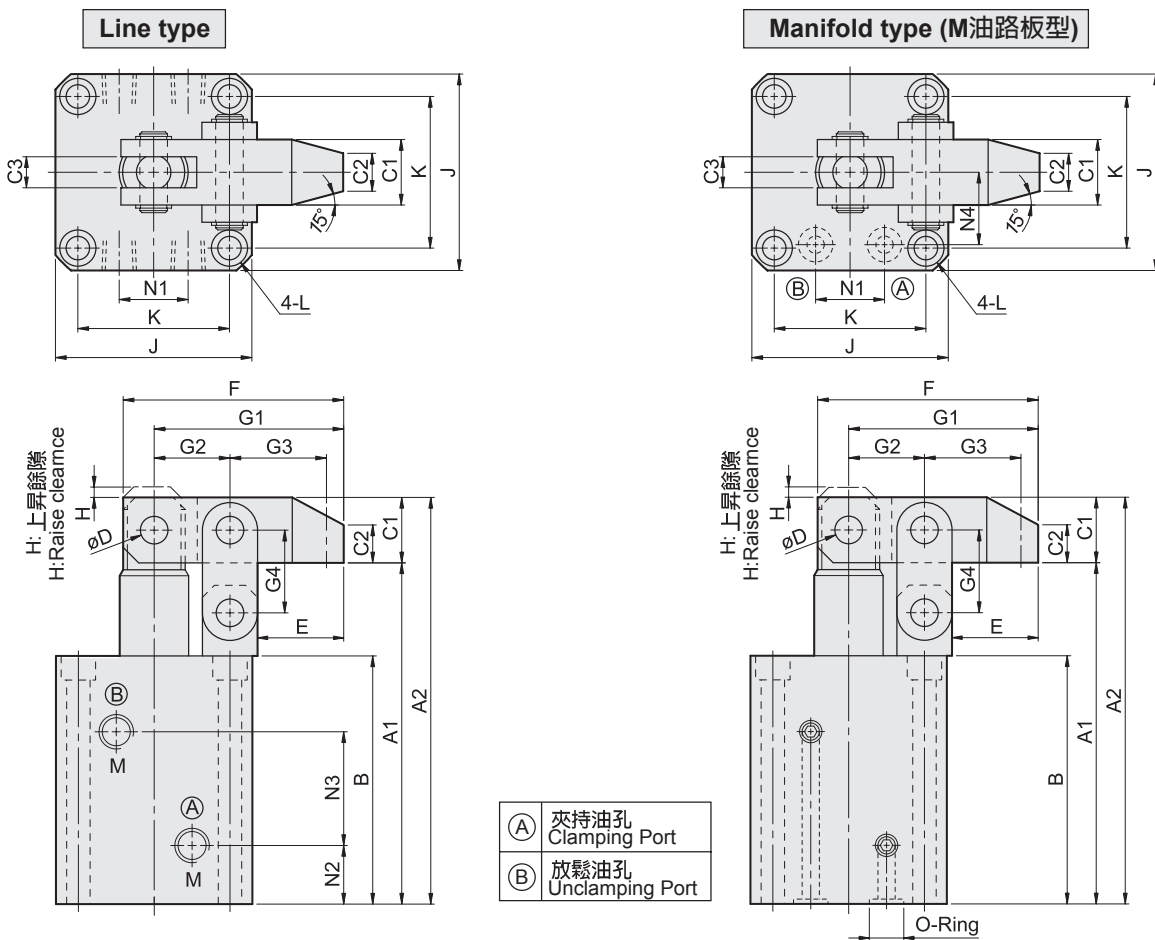
特性資料 Specifications

油缸內徑	Bore of cylinder	mm	φ 25	φ 32	φ 40	φ 50	φ 63
活塞桿徑	Piston rod diameter	mm	φ 18	φ 20	φ 22.4	φ 28	φ 35
總行程	Total stroke	mm	25	25	30	34	40
受壓面積 拉入/推出	Pressure area pull/push	cm ²	2.37 / 4.91	4.9 / 8.04	8.63 / 12.57	13.47 / 19.63	21.55 / 31.17
理論夾持力	Theoretical clamping	30kg/cm ²	116	190	288	453	701
使用流體	Fluid	已濾清之標準液壓油 Filtered hydraulic oil					
最大操作壓力	Max operation pressure	70 kg/cm ²					
操作壓力範圍	Operation pressure range	5-50 kg/cm ²					
動作方式	Acting type	複動式 Double acting					

訂購標示法 Ordering Code

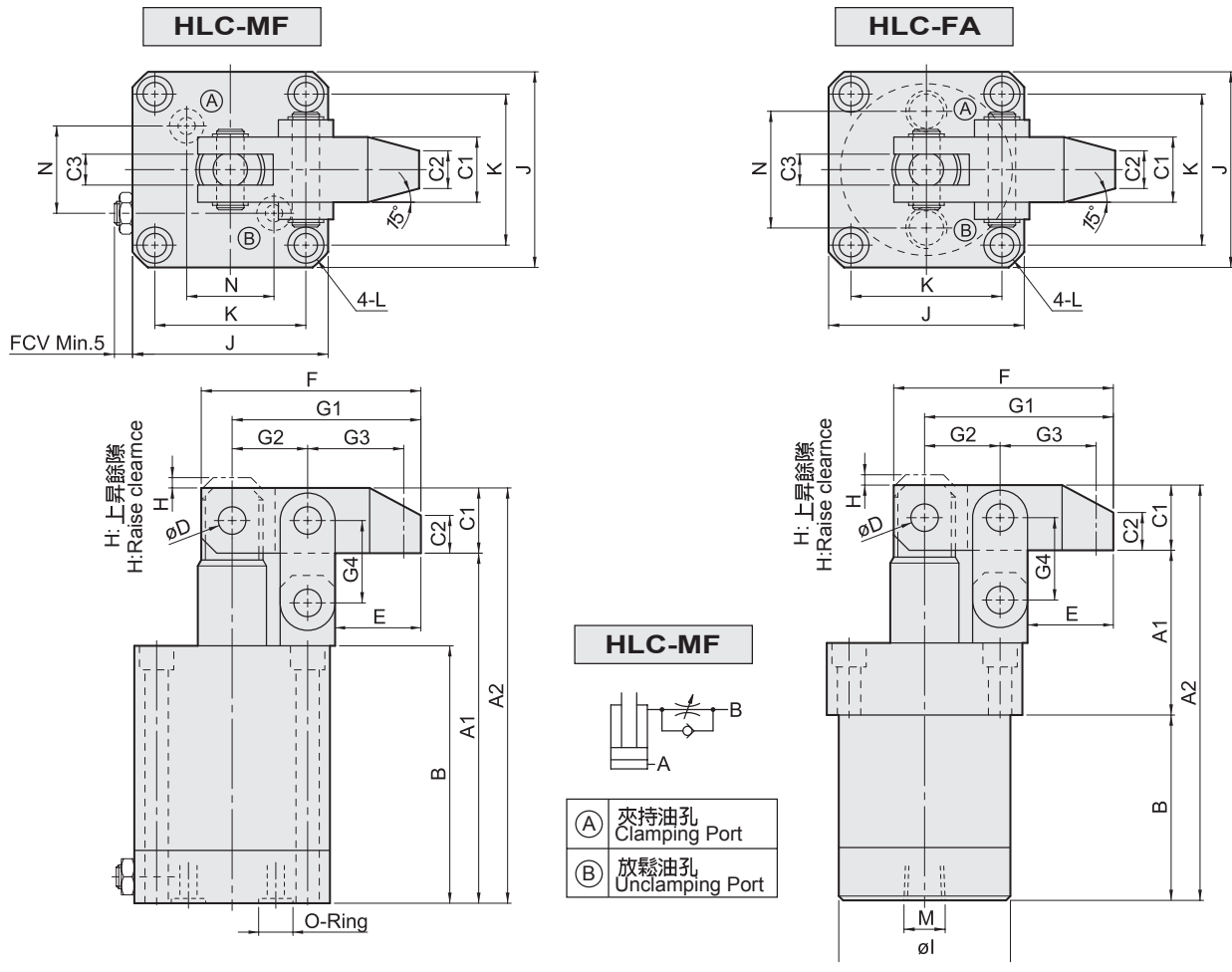


5108# HLC 槓桿式油壓缸 Hydraulic lever-type Cylinder



Item	Model	HLC-25 HLC-M25	HLC-32 HLC-M32	HLC-40 HLC-M40	HLC-50 HLC-M50	HLC-63 HLC-M63
A1		103	112	122	137	155
A2		122	131	144.2	162.4	186.8
B		76	85	90	100	111
C1		φ 19	φ 19	φ 22.2	φ 25.4	φ 31.8
C2		11	11	13	15	19
C3		9	9	10	11	15
D		φ 8	φ 8	φ 10	φ 12	φ 15
E		25	25	30	35.5	43
F		64	64	77	90	110
G1		55	55	66	77	94
G2		22	22	26	30	36
G3		28	28	34	39	48
G4		24	24	29	33	39
H		3	3	4	4	4
J		55	57	69	75	96
K		42	44	52	58	75
L		φ 6.8-φ 10.5×6.5D.	φ 6.8-φ 10.5×6.5D.	φ 9-φ 14×9D.	φ 9-φ 14×9D.	φ 11-φ 18×11D.
M		PT1/8	PT1/8	PT1/4	PT1/4	PT1/4
N1		18	22	26	32	38
N2		17	19	19	21.5	22
N3		33	38	40	45	52
N4		20	22	26	30	38
O-Ring		P7	P7	P8	P8	P9

5109# HLC 槓桿式油壓缸 MF 油路板附調速/FA 法蘭型 Manifold with flow control / Flange type Hydraulic lever-type Cylinder



Item	Model	HLC-MF-25	HLC-MF-32	HLC-MF-40	HLC-MF-50	HLC-FA-25	HLC-FA-32	HLC-FA-40	HLC-FA-50
A1		112	115	130	145	49	52	57	67
A2		131	134	152.2	170.4	131	134	152.2	170.4
B		85	88	98	108	63	63	73	78
C1		φ19	φ19	φ22.2	φ25.4	φ19	φ19	φ22.2	φ25.4
C2		11	11	13	15	11	11	13	15
C3		9	9	10	11	9	9	10	11
D		φ8	φ8	φ10	φ12	φ8	φ8	φ10	φ12
E		25	25	30	35.5	25	25	30	35.5
F		64	64	77	90	64	64	77	90
G1		55	55	66	77	55	55	66	77
G2		22	22	26	30	22	22	26	30
G3		28	28	34	39	28	28	34	39
G4		24	24	29	33	24	24	29	33
H		3	3	4	4	3	3	4	4
I		-	-	-	-	φ45	φ50	φ58	φ68
J		55	57	69	75	55	57	69	75
K		42	44	52	58	42	44	52	58
L		φ6.8-φ10.5×6.5D.		φ9-φ14×9D.		φ6.8-φ10.5×6.5D.		φ9-φ14×9D.	
M		-	-	-	-	PT1/8	PT1/8	PT1/4	PT1/4
N		19	21	23	28	25	32	40	50
O-Ring		P7	P7	P9	P9	-	-	-	-