

## 5112# HTB 薄型油壓缸 Hydraulic thin-type Cylinder

### 產品簡介

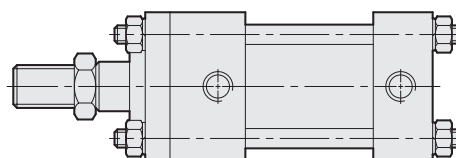
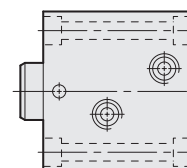
- 體積小，節省空間，安裝空間受限制的最佳選擇。
- 標準化規格，直接安裝，不需其它配件，降低成本。
- 缸體材質採用機械構造用炭素鋼，內壁特殊加工處理，表面光滑，使用壽命長。
- 軸向，側向油路板型，免配管提升整體美觀。

### Product Introduction

- Compact construction for space saving. Ideal for application in a restricted space.
- Standardized specifications. Direct installation without need of any further accessories for saving cost.
- The cylinder barrel is manufactured from structural carbon steel. Internal wall is specially treated, featuring maximum smoothness and long service life.
- Axial and side manifold type eliminate the use of piping for upgrading appearance elegance.

傳統油缸與薄型缸總長度之比較

A comparison of length between the traditional hydraulic cylinder and thin type cylinder.

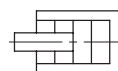


### 特性資料 Specifications

"安裝型式 Installation"	軸向 Axial	SD單軸；SW雙軸 Single end rod SD；Double end rod SW
	側向 Side	LA單軸；LW雙軸 Single end rod LA；Double end rod LW
操作壓力範圍	Operation pressure range	5-140 kg/cm <sup>2</sup>
使用速度範圍	Operation speed range	8-100 mm/sec
使用溫度範圍	Operation temperature range	-10~ + 60°C
使用流體	Fluid	已濾清之標準液壓油 Filtered hydraulic oil
動作方式	Acting type	複動式 Double acting
油缸本體材質	Material of cylinder barrel	炭素鋼 Carbon steel

F1: 推出 Push out ←

F2: 拉入 Pull in →



UNIT:kg

### 理論出力表 Clamping force

油缸內徑 Bore of cylinder (mm)	活塞桿徑 Piston-rod (mm)	受壓面積 Pressure area (cm <sup>2</sup> )		操作壓力 Operation pressure (kg/cm <sup>2</sup> )									
				10		35		70		100		140	
		F1	F2	F1	F2	F1	F2	F1	F2	F1	F2	F1	F2
φ 20	φ 12	3.14	2.01	31	20	110	71	220	141	314	201	440	281
φ 25	φ 14	4.91	3.37	49	34	172	118	344	236	491	337	687	472
φ 32	φ 20	8.04	4.9	80	49	281	172	563	343	804	490	1126	686
φ 40	φ 25	12.57	7.66	126	77	440	268	880	536	1257	766	1760	1072
φ 50	φ 30	19.64	12.57	196	126	687	440	1375	880	1964	1257	2750	1760
φ 63	φ 35	31.17	21.55	312	216	1091	754	2182	1509	3117	2155	4364	3017
φ 80	φ 45	50.27	34.37	503	344	1759	1203	3519	2406	5027	3437	7038	4812

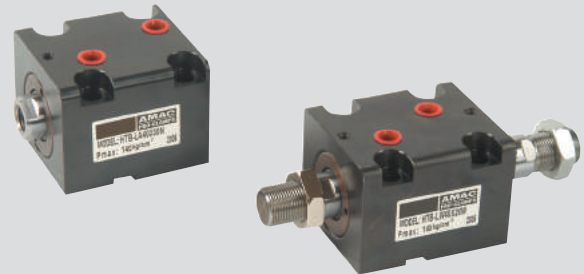
**5112# HTB 薄型油壓缸**  
**Hydraulic thin-type Cylinder**

**SD 軸向安裝型(單軸)  $\phi 20-\phi 80$**   
**SD Axial Mounting Type (Single End Rod)**



**SW 軸向安裝型(雙軸)  $\phi 32-\phi 80$**   
**SW Axial Mounting Type (Double End Rod)**

**LA 側向安裝型(單軸)  $\phi 32-\phi 63$**   
**LA Side Mounting Type (Single End Rod)**



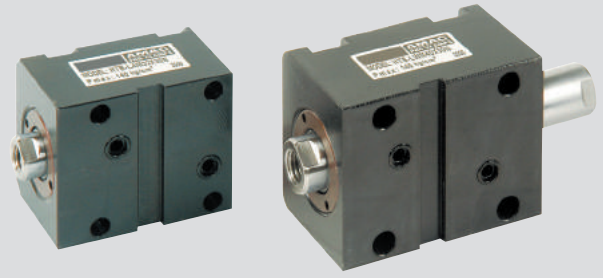
**LW 側向安裝型(雙軸)  $\phi 32-\phi 63$**   
**LW Side Mounting Type (Double End Rod)**

**SDM-A 軸向前油路板型  $\phi 20-\phi 80$**   
**SDM-A Axial Front Manifold Type**



**SDM-B 軸向後油路板型  $\phi 20-\phi 80$**   
**SDM-B Axial Back manifold Type**

**LAM 側向油路板型(單軸)  $\phi 32-\phi 63$**   
**LAM Side Manifold Type (Single End Rod)**



**LWM 側向油路板型(雙軸)  $\phi 32-\phi 63$**   
**LWM Side manifold Type (Double End Rod)**

**價格表 SDMA, SDMB, SW, LW, LAM, LWM, 價格另議**

Stroke	Type	SD						LA				LAM LWM			
	Bore	$\phi 20$	$\phi 25$	$\phi 32$	$\phi 40$	$\phi 50$	$\phi 63$	$\phi 80$	$\phi 32$	$\phi 40$	$\phi 50$	$\phi 63$	$\phi 32$	$\phi 40$	$\phi 50$
5												--	--	--	--
10												•	•	•	•
15												--	--	--	--
20												•	•	•	•
25												--	--	--	--
30												•	•	•	•
40												•	•	•	•
50												•	•	•	•

# 5113# HTB 薄型油壓缸 SD.SW Hydraulic thin-type Cylinder - SD.SW

## 訂購標示法 Ordering Code

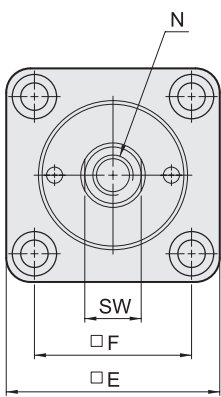
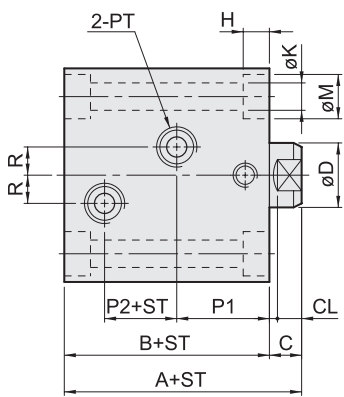
HTB - SD 32 × 20 N

↑      ↑      ↑      ↑      ↑

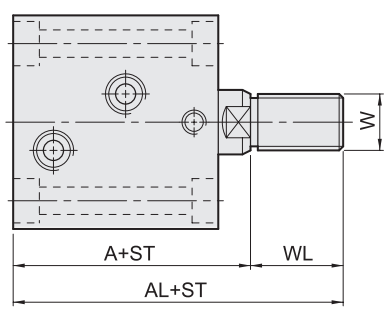
①      ②      ③      ④      ⑤

①	系列別 Series	HTB	
②	安裝型式 Mounting type	SD	軸向單軸 Single end rod type
		SW	軸向雙軸 Double end rod type
③	油缸內徑 Bore of cylinder	ø20. ø25. ø32. ø40. ø50. ø63. ø80	
④	標準行程 Standard stroke	請參考行程規格表 Please refer to the stroke specification	
⑤	軸端型式 Rod end type	內牙N: Female thread N 外牙W: Male thread W	

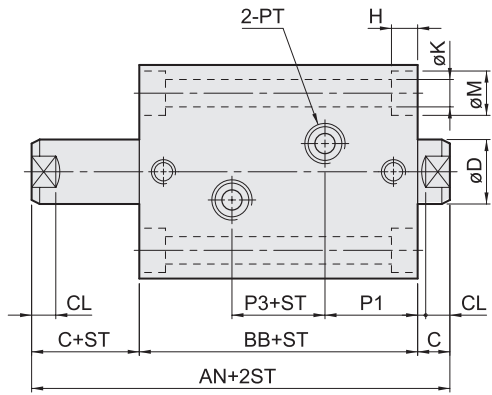
**SD-N**



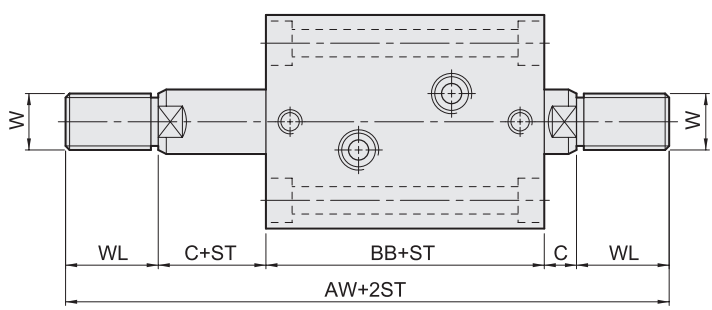
**SD-W**



**SW-N**



**SW-W**



**ST=Stroke**

## Dimensional table

ø20.ø25右列行程之本體長度B尺寸相同 (5,10) (15,20) (25,30)  
ø20.ø25 The length "B" of cylinder body is the same of the stroke:(5,10) (15,20) (25,30)

Bore	A	AL	AN	AW	B	BB	C	CL	D	SW	E	F	H	K	M	N	W	WL	P1	P2	P3	R	PT
ø20	51	71	-	-	43	-	8	6	12	10	42	30	5.5	5.6	9	M8×1.25×12D.	M10×1.25	20	22.5	11	-	5	1/8
ø25	53	75	-	-	45	-	8	6	14	12	48	36	5.5	5.6	9	M10×1.5×15D.	M12×1.25	22	23	12	-	5	1/8
ø32	64	89	89	139	54	69	10	7	20	17	62	47	5.6	6.8	11	M12×1.75×15D.	M16×1.5	25	28	14	13	10	1/4
ø40	65	95	90	150	55	70	10	7	25	22	70	52	9	9	14	M16×2.0×20D.	M22×1.5	30	28	15	14	10	1/4
ø50	71	106	97	167	60	75	11	8	30	27	80	58	11	11	18	M20×2.5×25D.	M26×1.5	35	29.5	18	16	10	1/4
ø63	80	120	108	188	67	82	13	10	35	32	94	69	13	13	20	M27×3.0×35D.	M30×1.5	40	31	20	20	10	3/8
ø80	95	140	127	217	78	93	17	14	45	41	114	86	15	15	22	M30×3.5×35D.	M39×1.5	45	33	27	27	15	3/8

# 5114# HTB 油路板型油壓缸 SDMA. SDMB Manifold Type Hydraulic Cylinder - SDMA. SDMB

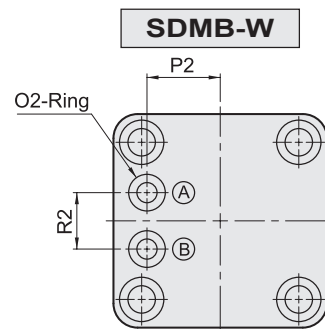
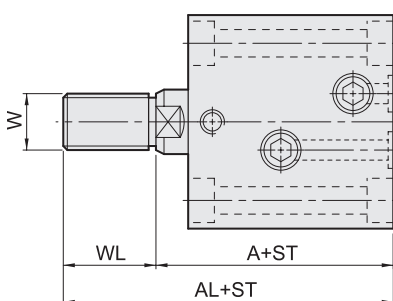
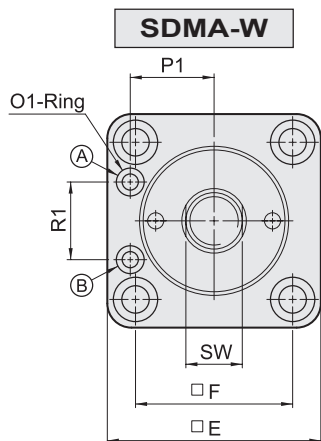
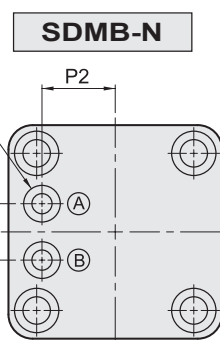
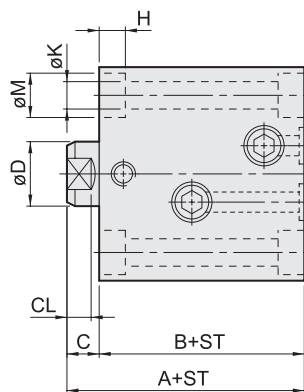
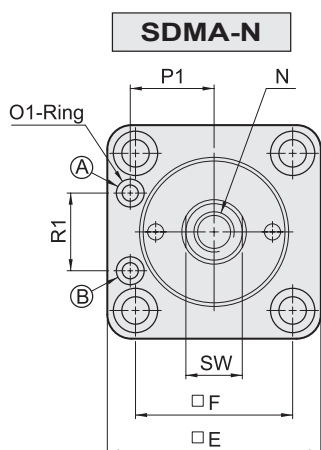
## 訂購標示法 Ordering Code

HTB - SDMA 32 × 20 N

↑            ↑            ↑            ↑            ↑

①            ②            ③            ④            ⑤

①	系列別 Series	HTB	
②	安裝型式 Mounting type	SDMA	軸向前油路板型 Axial front manifold type
		SDMB	軸向後油路板型 Axial back manifold type
③	油缸內徑 Bore of cylinder	ø20 .ø25 .ø32. ø40. ø50. ø63. ø80	
④	標準行程 Standard stroke	請參考行程規格表 Please refer to the stroke specification	
⑤	軸端型式 Rod end type	內牙 N: Female thread N 外牙 W: Male thread W	



(A) 推出油孔  
Push out

(B) 拉入油孔  
Pull in

ST=Stroke

## Dimensional table

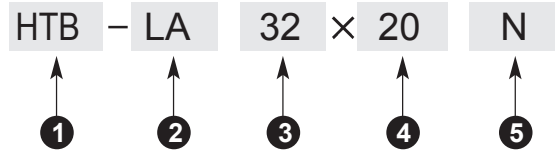
ø20.ø25右列行程之本體長度B尺寸相同 (5,10) (15,20) (25,30)

ø20.ø25 The length "B" of cylinder body is the same of the stroke:(5,10) (15,20) (25,30)

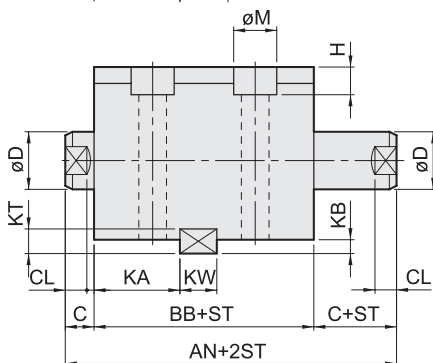
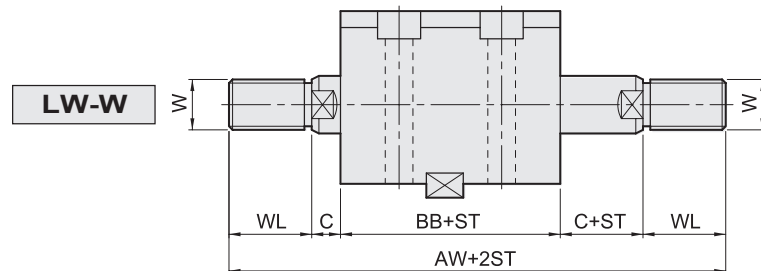
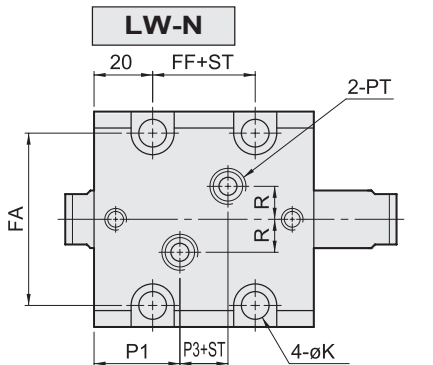
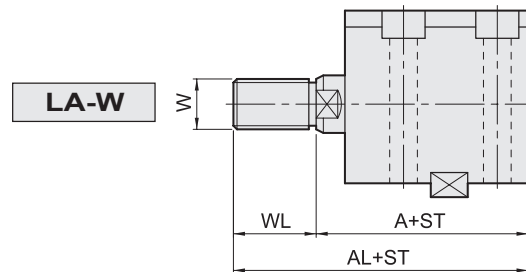
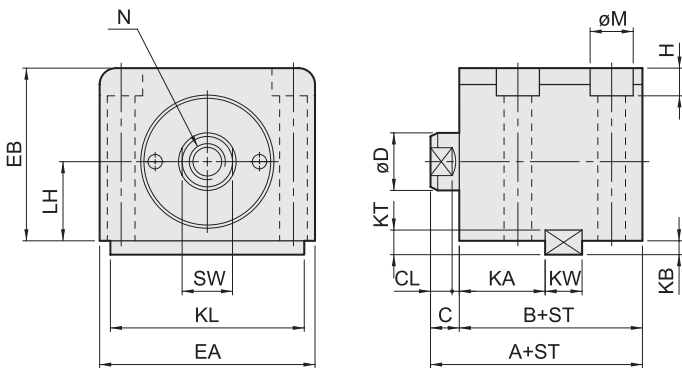
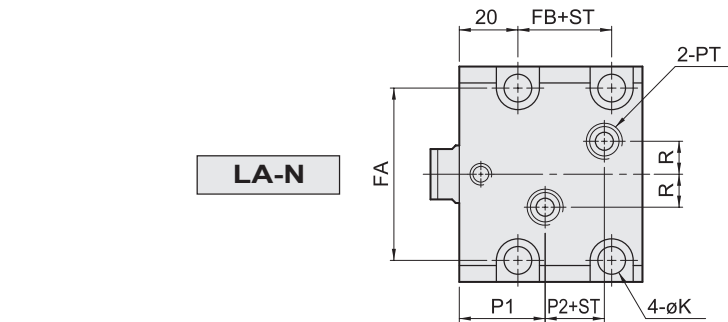
Bore	A	AL	B	C	CL	D	SW	E	F	H	K	M	N	W	WL	SDMA			SDMB		
																P1	R1	O1	P2	R2	O2
ø20	51	71	43	8	6	12	10	42	30	5.5	5.6	9	M8×1.25×12D.	M10×1.25	20	16.5	13	P4	13	11	P5
ø25	53	75	45	8	6	14	12	48	36	5.5	5.6	9	M10×1.5×15D.	M12×1.25	22	19.5	18	P4	15	13	P7
ø32	64	89	54	10	7	20	17	62	47	6.5	6.8	11	M12×1.75×15D.	M16×1.5	25	24	24	P6	20	20	P9
ø40	65	95	55	10	7	25	22	70	52	9	9	14	M16×2.0×20D.	M22×1.5	30	27	26	P6	24	20	P9
ø50	71	106	60	11	8	30	27	80	58	11	11	18	M20×2.5×25D.	M26×1.5	35	32	27	P8	29	20	P9
ø63	80	120	67	13	10	35	32	94	69	13	13	20	M27×3.0×35D.	M30×1.5	40	38	35	P8	35	26	P11
ø80	95	140	78	17	14	45	41	114	86	15	15	22	M30×3.5×35D.	M39×1.5	45	47	45	P11	44	30	P11

# 5115# HTB 薄型油壓缸 LA. LW Hydraulic thin-type Cylinder - LA. LW

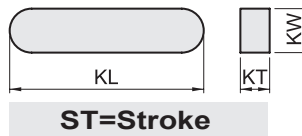
## 訂購標示法 Ordering Code



<b>1</b>	系列別 Series	HTB		
<b>2</b>	安裝型式 Mounting type	LA	側向單軸 Single end rod type	
		LW	側向雙軸 Double end rod type	
<b>3</b>	油缸內徑 Bore of cylinder	ø32. ø40. ø50. ø63.		
<b>4</b>	標準行程 Standard stroke	10. 20. 30. 40. 50		
<b>5</b>	軸端型式 Rod end type	內牙N: Female thread N 外牙W: Male thread W		



### KEY



### Key size

UNIT:mm

Bore	KW	KT	KL	KA	KB
ø32	12	8	63	28	4.5
ø40	12	8	70	28	4.5
ø50	14	9	80	29	5
ø63	16	10	100	31	5.5

### Dimensional table

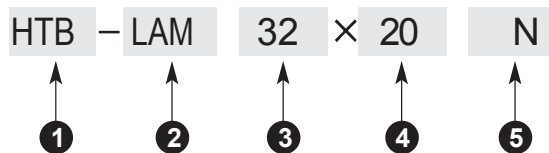
右列行程之本體長度B及BB尺寸相同 (5,10) (15,20) (25,30) (35,40) (45,50)

The length "B" and "BB" of cylinder body is the same of the stroke: (5, 10) (15, 20) (25, 30) (35, 40) (45, 50)

Bore	A	AL	AN	AW	B	BB	C	CL	D	SW	EA	EB	LH	FA	FB	FF	H	K	M	N	W	WL	P1	P2	P3	R	PT
ø32	64	89	89	139	54	69	10	7	20	17	70	56	25	56	24	32	9	9	14	M12×1.75×15D.	M16×1.5	25	28	14	13	10	1/4
ø40	65	95	90	150	55	70	10	7	25	22	80	64	29	62	23	32	11	11	18	M16×2.0×20D.	M22×1.5	30	28	15	14	10	1/4
ø50	71	106	97	167	60	75	11	8	30	27	94	74	34	74	27	35	13	13	20	M20×2.5×25D.	M26×1.5	35	29.5	18	16	10	1/4
ø63	80	120	108	188	67	82	13	10	35	32	114	89	42	90	32	42	15	15	22	M27×3.0×35D.	M30×1.5	40	31	20	20	10	3/8

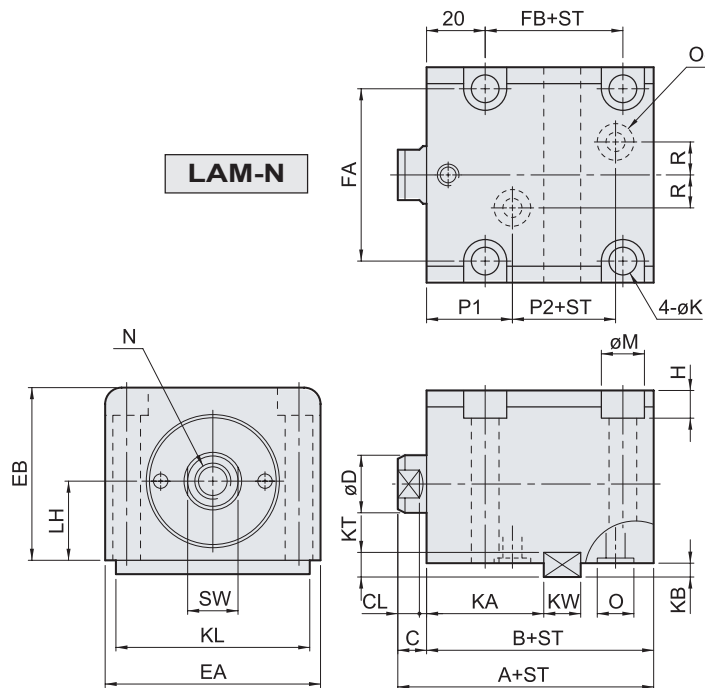
# 5116# HTB 油路板型油壓缸 LAM. LWM Manifold Type Hydraulic Cylinder - LAM. LWM

## 訂購標示法 Ordering Code

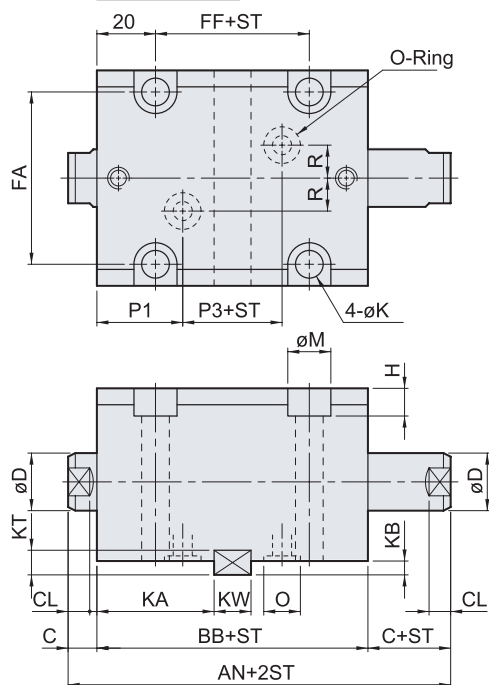


<b>1</b>	系列別 Series	HTB	
<b>2</b>	安裝型式 Mounting type	LAM	側向單軸 Single end rod type
		LWM	側向雙軸 Double end rod type
<b>3</b>	油缸內徑 Bore of cylinder	ø32. ø40. ø50. ø63	
<b>4</b>	標準行程 Standard stroke	10. 20. 30. 40. 50	
<b>5</b>	軸端型式 Rod end type	內牙N: Female thread N 外牙W: Male thread W	

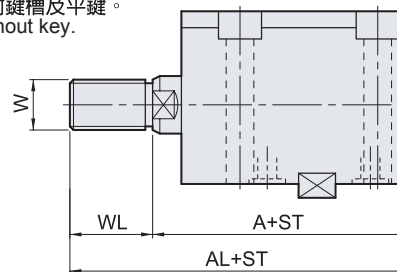
註行程10mm無附鍵槽及平鍵。  
Stroke: 10mm without key.



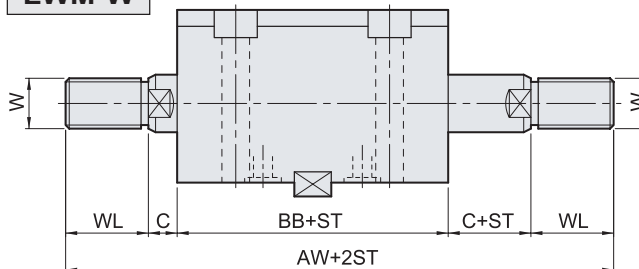
### LWM-N



### LAM-W



### LWM-W



### KEY



### Key size

UNIT:mm

Bore	KW	KT	KL	KA	KB
ø32	12	8	63	38	4.5
ø40	12	8	70	38	4.5
ø50	14	9	80	40	5
ø63	16	10	100	42	5.5

ST=Stroke

### Dimensional table

右列行程之本體長度B及BB尺寸相同 (5, 10)(15, 20)(25, 30)(35, 40)(45, 50)  
The length "B" and "BB" of cylinder body is the same of the stroke: (5, 10)(15, 20)(25, 30)(35, 40)(45, 50)

Bore	A	AL	AN	AW	B	BB	C	CL	D	SW	EA	EB	LH	FA	FB	FF	H	K	M	N	W	WL	P1	P2	P3	R	O
ø32	64	89	89	139	54	69	10	7	20	17	70	56	25	56	24	32	9	9	14	M12×1.75×15D.	M16×1.5	25	28	14	13	10	P9
ø40	65	95	90	150	55	70	10	7	25	22	80	64	29	62	23	32	11	11	18	M16×2.0×20D.	M22×1.5	30	28	15	14	10	P9
ø50	71	106	97	167	60	75	11	8	30	27	94	74	34	74	27	35	13	13	20	M20×2.5×25D.	M26×1.5	35	29.5	18	16	10	P11
ø63	80	120	108	188	67	82	13	10	35	32	114	89	42	90	32	42	15	15	22	M27×3.0×35D.	M30×1.5	40	31	20	20	10	P11