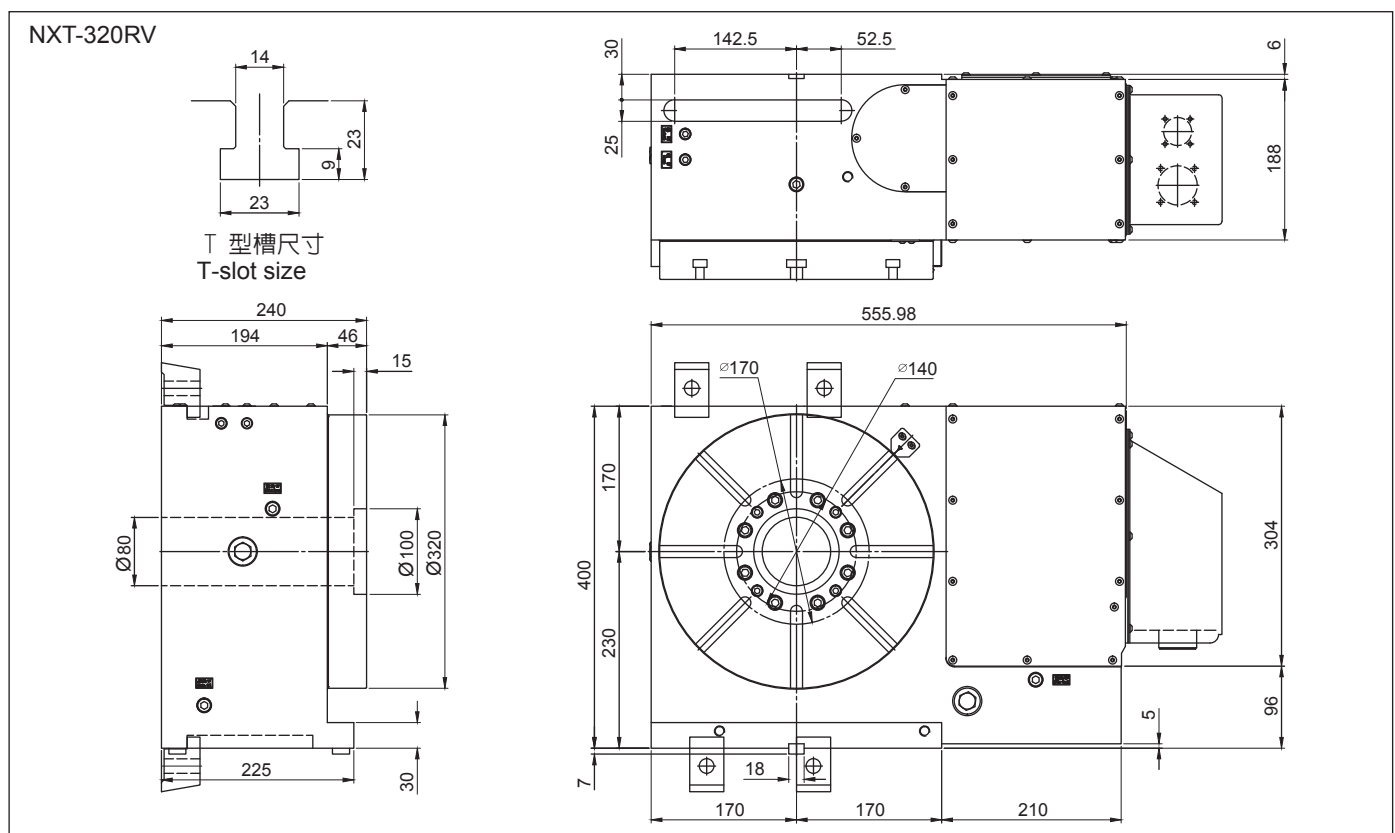
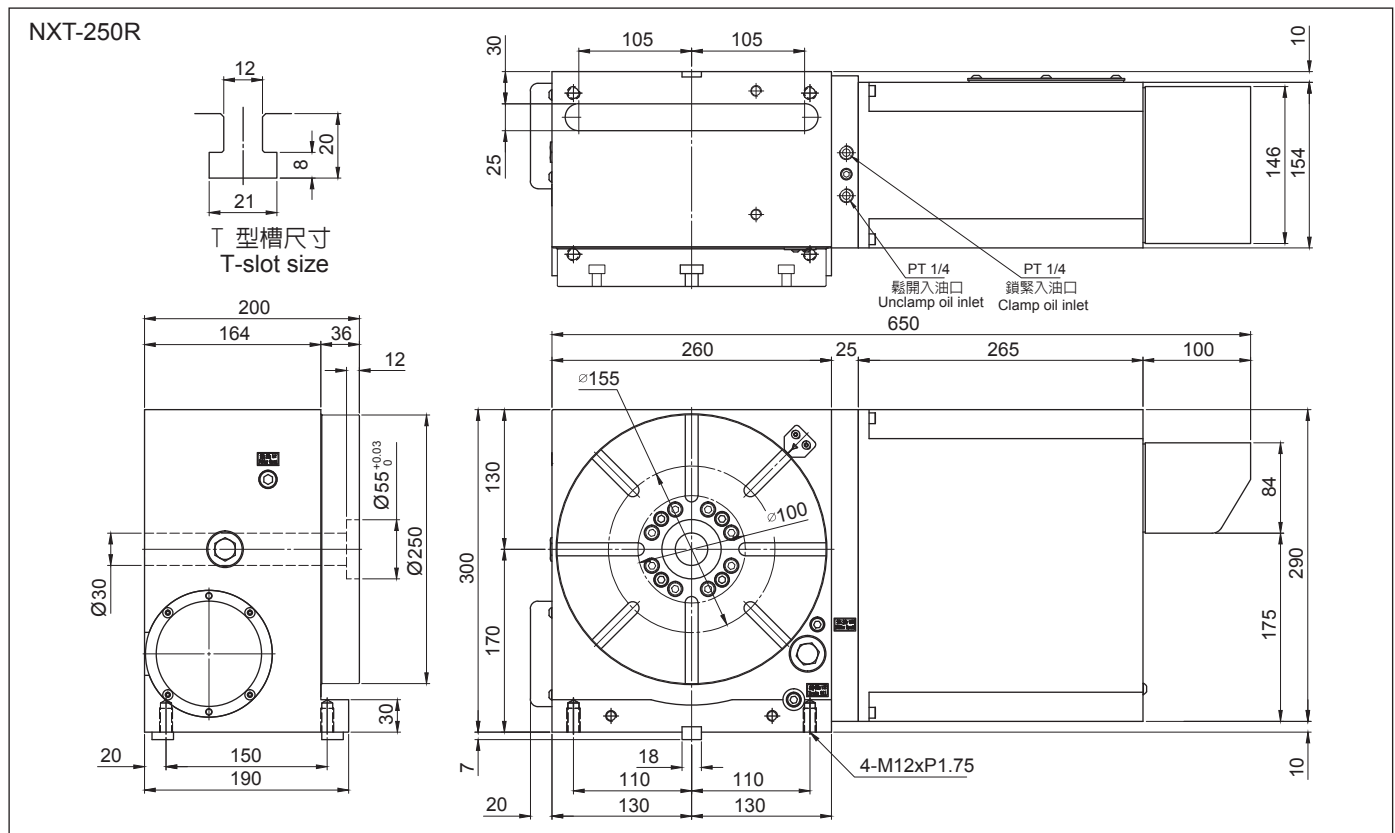


## 5098# 電腦數控齒式分割盤-立臥兩用型 CNC Hydraulic Coupling Gear Indexer-Vertical & Horizontal Type

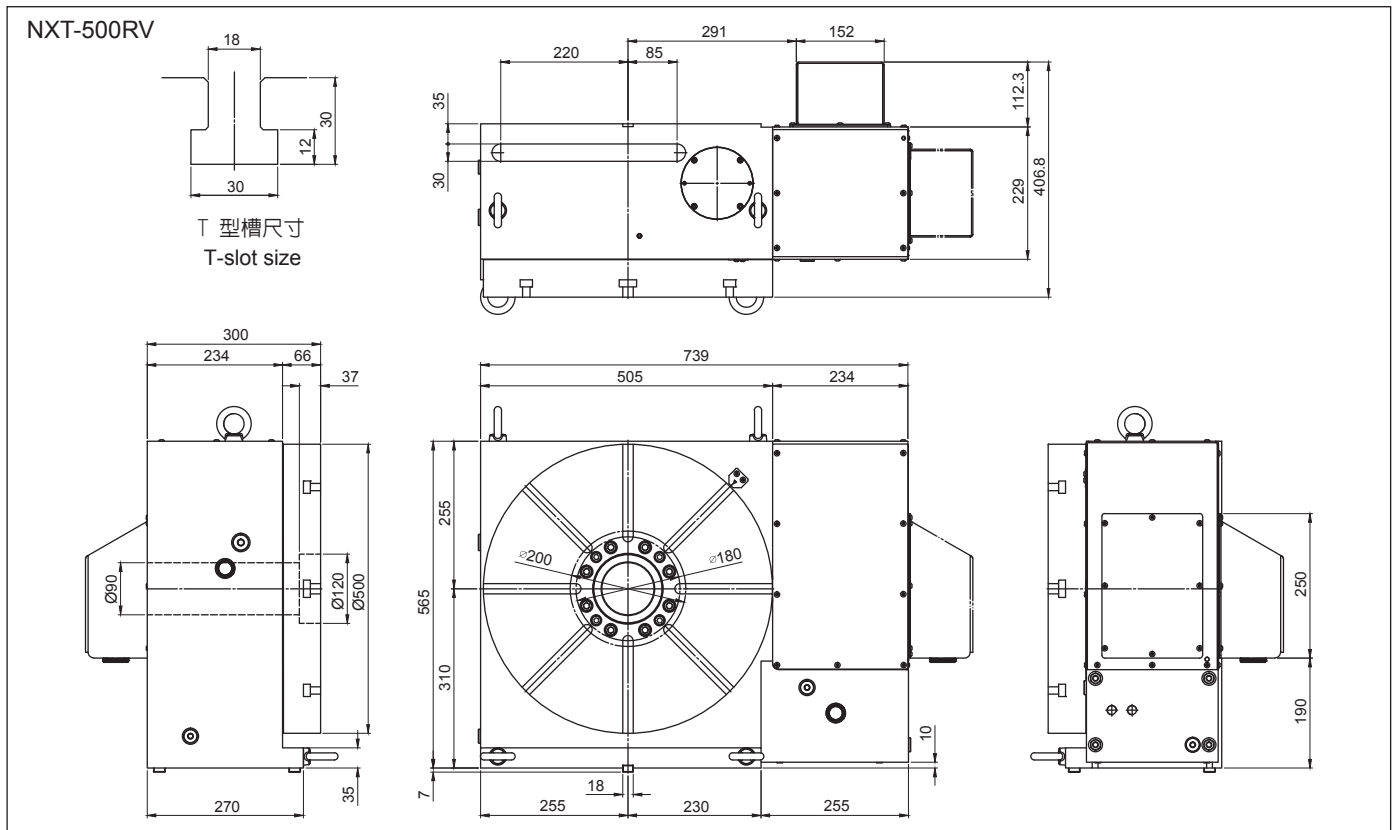
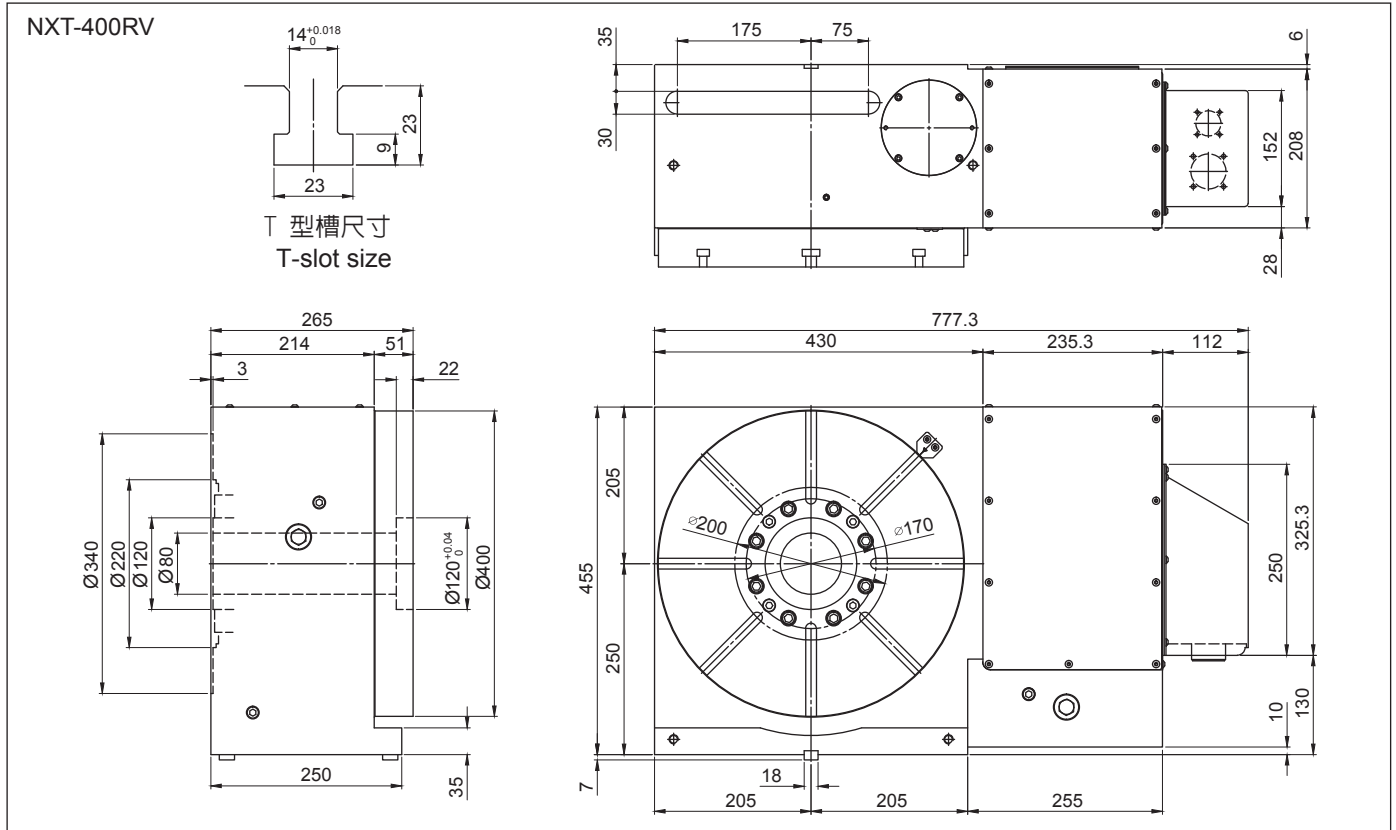


型式 Model		NXT-250R	NXT-320RV	NXT-400RV	NXT-500RV				
盤面直徑 Table diameter	mm	φ 250	φ 320	φ 400	φ 500				
基準中心孔Center bore	mm	φ 55 H7	φ 100 H7	φ 120 H7	φ 120 H7				
主軸中心穿透孔 Diameter of center through hole	mm	φ 30	φ 80	φ 80	φ 90				
垂直放置中心高 Center height (vertically)	mm	170	230	250	310				
水平放置總高 Overall height (horizontally)	mm	200	240	265	300				
T型槽寬度 Width of T-slot	mm	12 H7	14 H7	14 H7	18 H7				
基準導槽寬 Width of Guide block	mm	18 H7	18 H7	18 H7	18 H7				
鎖緊裝置(油壓) Clamping device (Hydraulic)	kg/cm <sup>2</sup>	35	35	35	35				
最小分割角度 Min. indexing degree	degree	5°	1°	5°	1°	5°	1°	5°	1°
等分割數 Table division		72	360	72	360	72	360	72	360
分割精度(累積值) Indexing accuracy(accumulative)	arc sec	4"		4"		4"		4"	
重現精度 Repeatability	arc sec	1±"		1±"		1±"		1±"	
最高轉速 Max. rotation speed	轉盤 Table	rpm	16.6	27.7	16.6	11.1			
	馬達 Motor	rpm	2000	2000	2000	2000			
伺服馬達(選配) Servo motor (optional)	發那科 FANUC		8ai	12ai	12ai	12ai			
	三菱 MITSUBISHI		HF-104 / 154	HF-204T	HF-204T	HF-204T			
	西門子 SIEMENS		1FK7063	1FK7083	1FK7083	1FK7083			
	海德漢 HEIDENHAIN		QSY116E	QSY155B	QSY155B	QSY155B			
總齒數比 Gear ratio		1/120	1/72	1/120	1/180				
容許切削扭力 Permissible cutting torque		48	78	170	240				
鎖緊扭力 Clamping torque	F	kg	1500	2000	2500	3000			
	F×R	kg-m	300	400	500	600			
	F×L	kg-m	350	450	550	650			
容許積載荷重 Load Capacity	0°	kg	300	350	500	600			
	90°	kg	125	175	250	300			
淨重 Net weight	kg	94	178	300	420				

# 5098# 電腦數控齒式分割盤-立臥兩用型 CNC Hydraulic Coupling Gear Indexer-Vertical & Horizontal Type

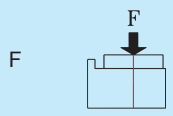
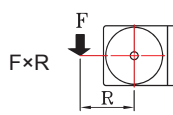
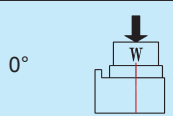


**5098# 電腦數控齒式分割盤-立臥兩用型**  
**CNC Hydraulic Coupling Gear Indexer-Vertical & Horizontal Type**

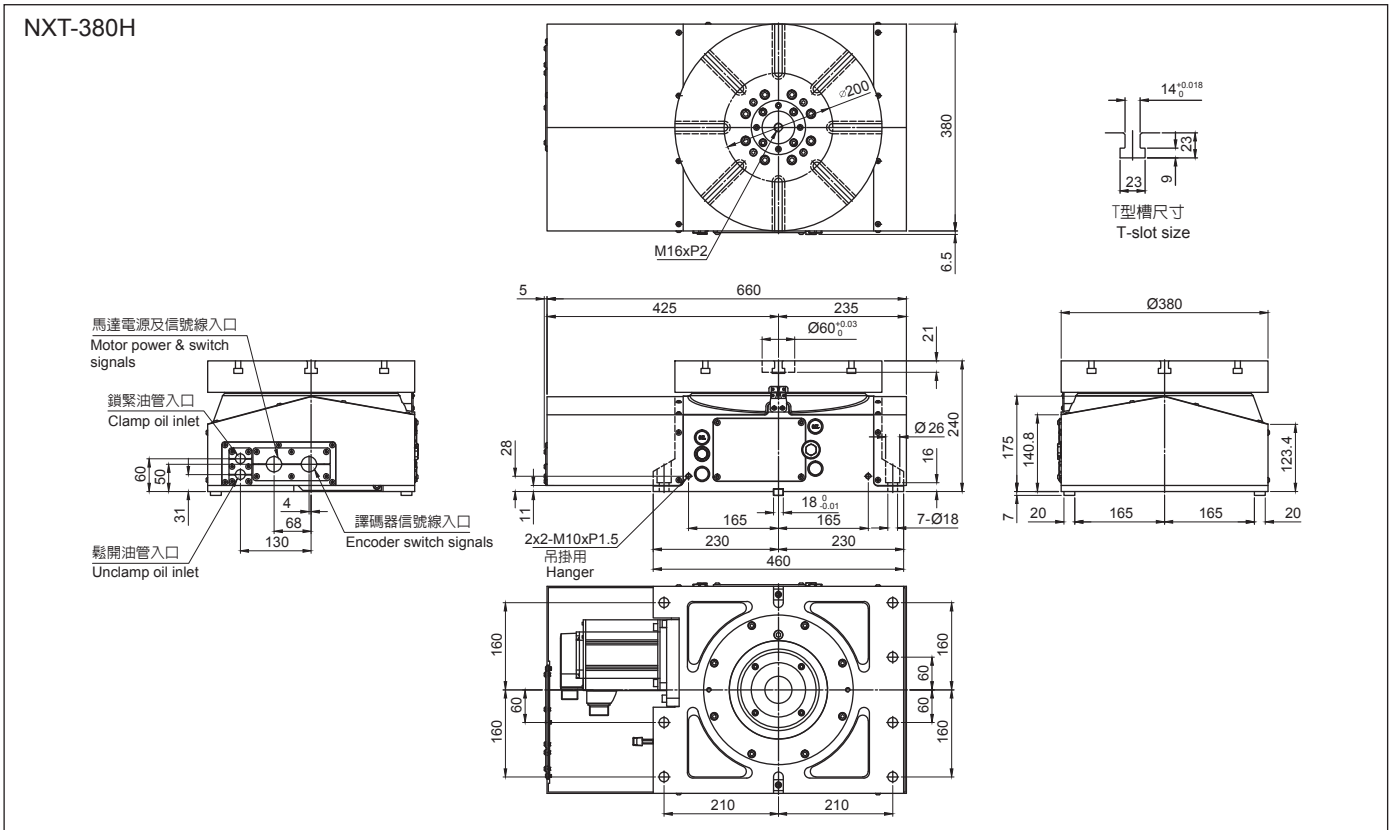
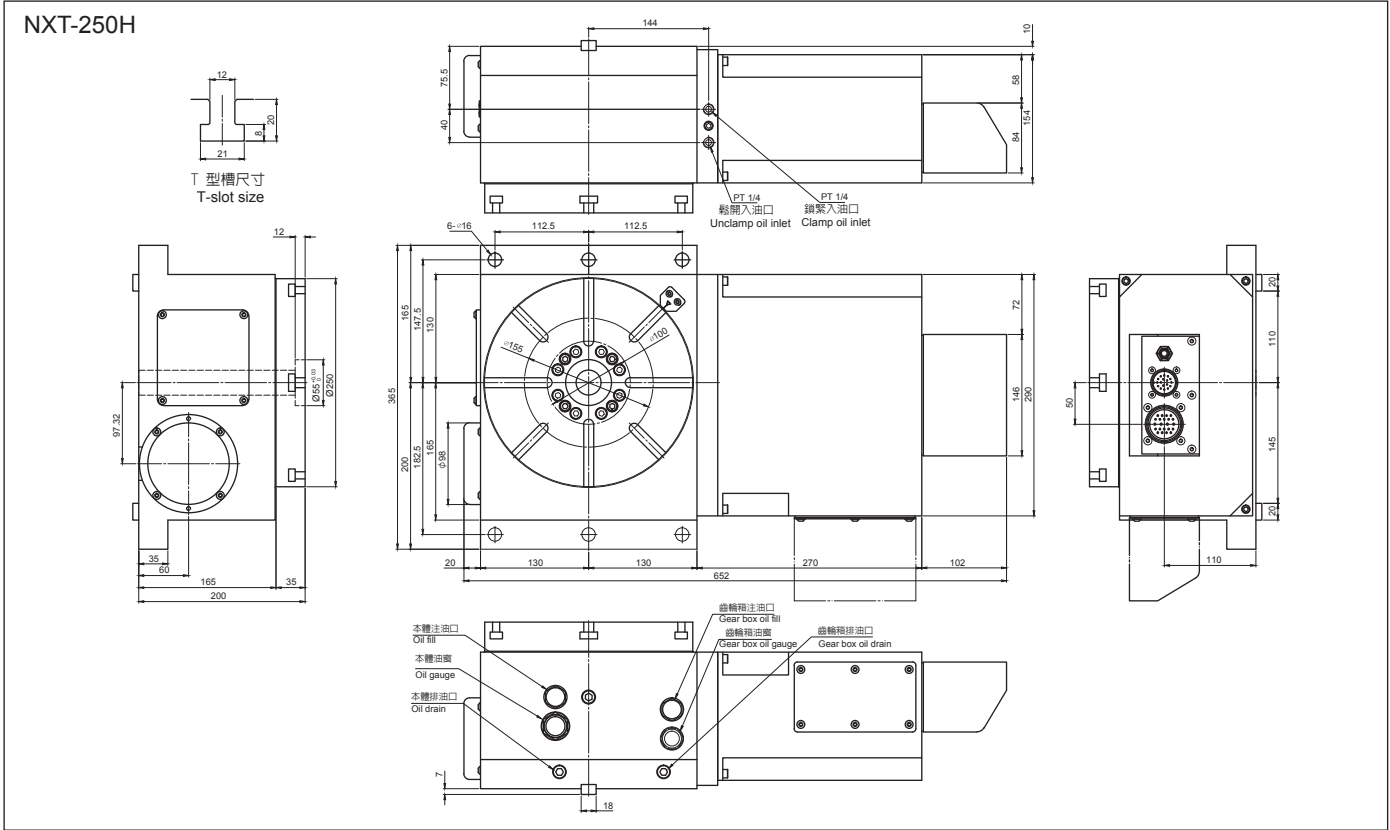


# 5099# 電腦數控齒式分割盤-臥式 CNC Hydraulic Coupling Gear Indexer Horizontal Type



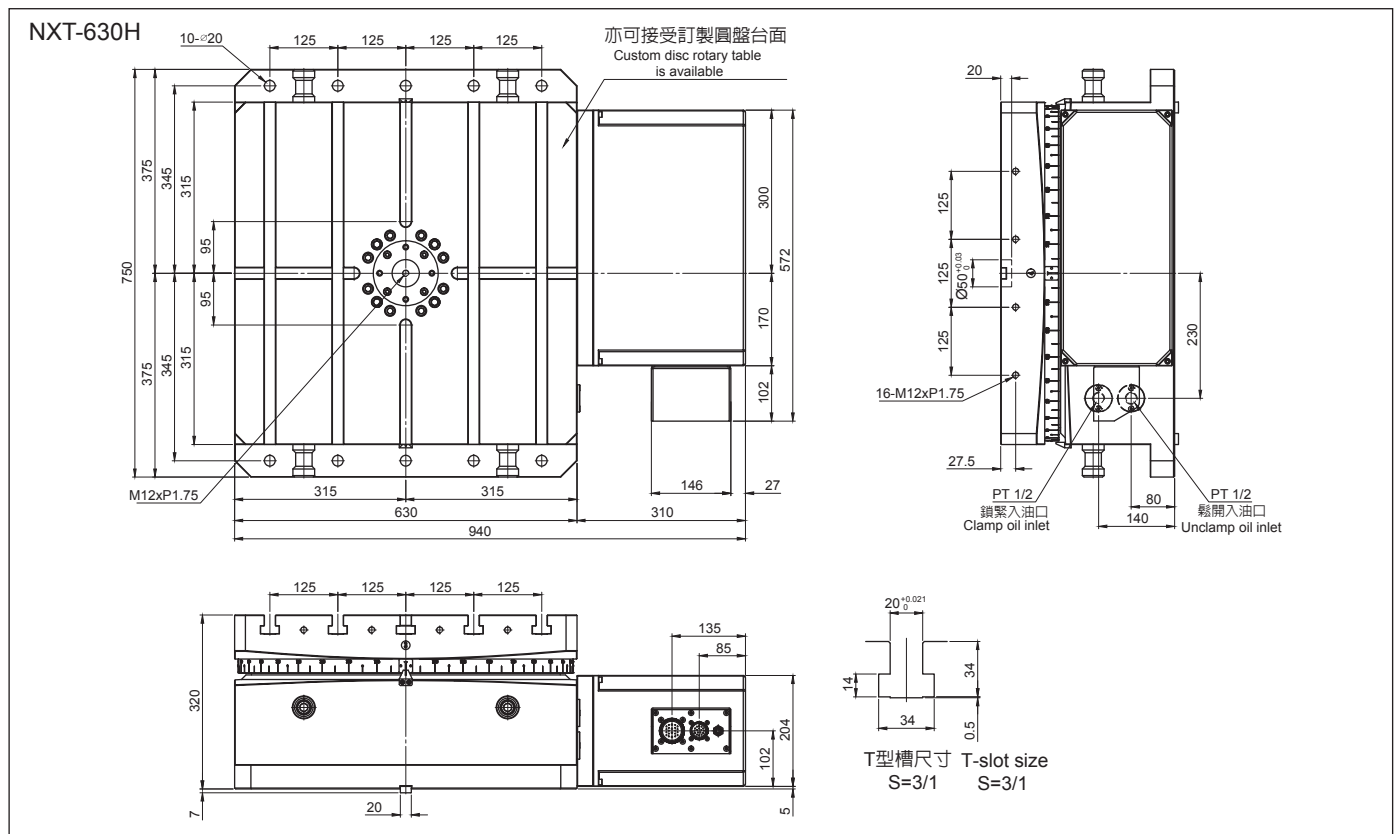
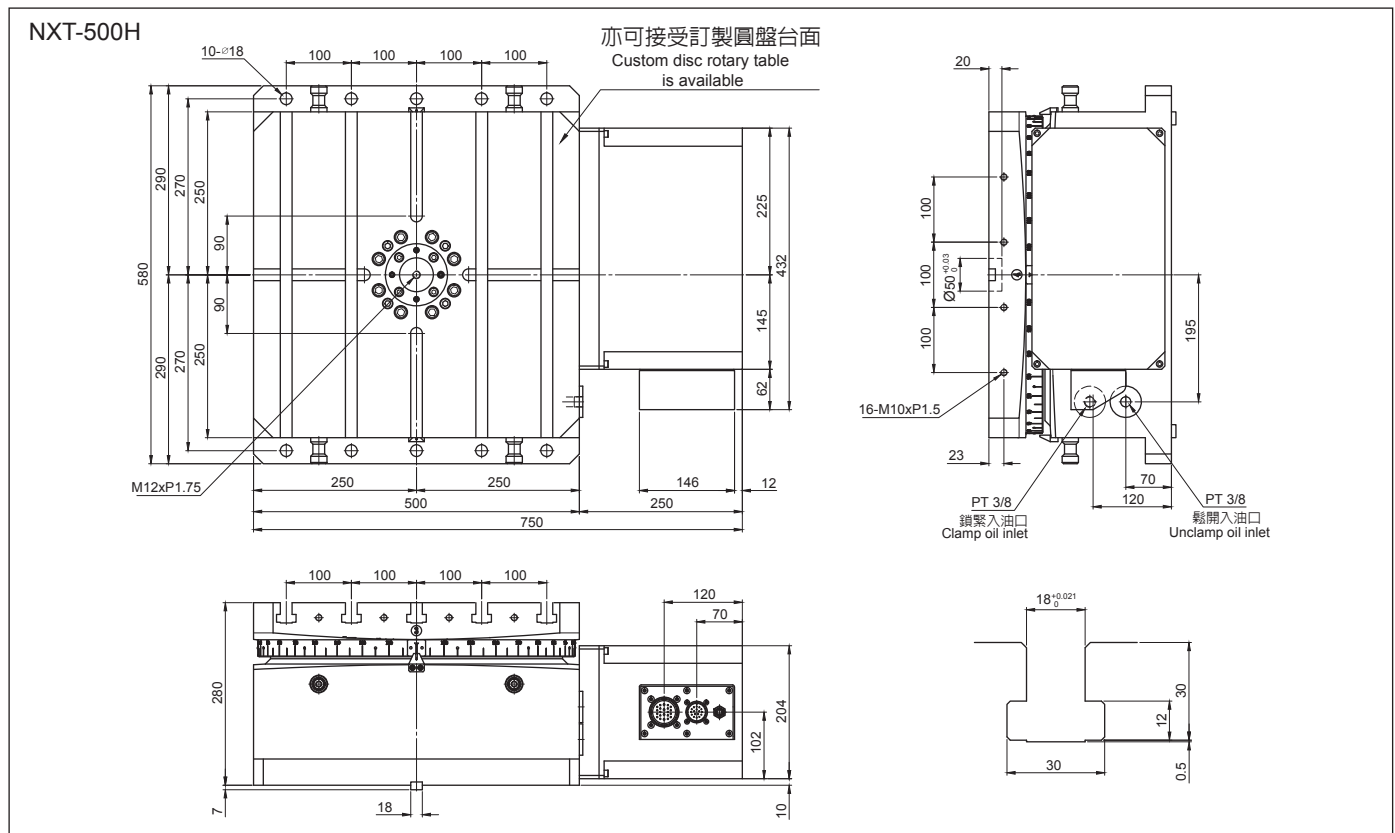
型式 Model		NXT-250H	NXT-380H	NXT-500H	NXT-630H	NXT-800H	NXT-1000H	
盤面尺寸 Table diameter (L x W)	mm	$\phi 250$	$\phi 380$	500 x 500	630 x 630	800 x 800	1000 x 1000	
盤面主軸中心孔 Diameter of pallet center hole	mm	$\phi 55$ H7	$\phi 60$ H7	$\phi 50$ H7	$\phi 50$ H7	$\phi 60$ H7	$\phi 60$ H7	
機台總高 Overall height of table	mm	200	240	280	320	380	410	
盤面T型槽寬度 Width of pallet T-slot	mm	12	14 H7	18 H7	20 H7	22 H7	22 H7	
基準導槽寬 Width of Guide block	mm	18	x	18 H7	20 H7	20 H7	20 H7	
鎖緊裝置(油壓) Clamping device (Hydraulic)	kg/cm <sup>2</sup>	35	35	35	35	35	35	
最小分割角度 Min. indexing degree	degree	$5^\circ$   $1^\circ$	$5^\circ$   $1^\circ$	$5^\circ$   $1^\circ$	$5^\circ$   $1^\circ$	$5^\circ$   $1^\circ$	$5^\circ$   $1^\circ$	
等分割數 Table division		72   360	72   360	72   360	72   360	72   360	72   360	
分割精度(累積值) Indexing accuracy(accumulative)	arc sec	4"	4"	4"	4"	4"	4"	
重現精度 Repeatability	arc sec	1±"	1±"	1±"	1±"	1±"	1±"	
最高轉速 Max. rotation speed	轉盤 Table	rpm	16.6	16.6	16.6	11.1	11.1	8.33
	馬達 Motor	rpm	2000	2000	2000	2000	2000	2000
伺服馬達(選配) Servo motor (optional)	發那科 FANUC		8ai	8ai	12ai	12ai	22ai	22ai
	三菱 MITSUBISHI		HF-104/154	HF-154	HF-204	HF-204S	HF-354S	HF-354S
	西門子 SIEMENS		1FK7063	1FK7063	1FK6083	1FK6083	1FK6101	1FK6101
總齒數比 Gear ratio		1/120	1/120	1/120	1/180	1/180	1/240	
旋轉扭力 Rotation torque		48	48	200	280	430	450	
鎖緊扭力 Clamping torque		kg	1500	2000	2500	4000	6000	8000
		kg-m	300	400	500	600	800	12000
容許積載荷重 Load Capacity		kg	300	350	1200	2500	4000	8000
淨重 Net weight	kg	198	210	300	550	1000	1970	

# 5099# 電腦數控齒式分割盤-臥式 CNC Hydraulic Coupling Gear Indexer Horizontal Type

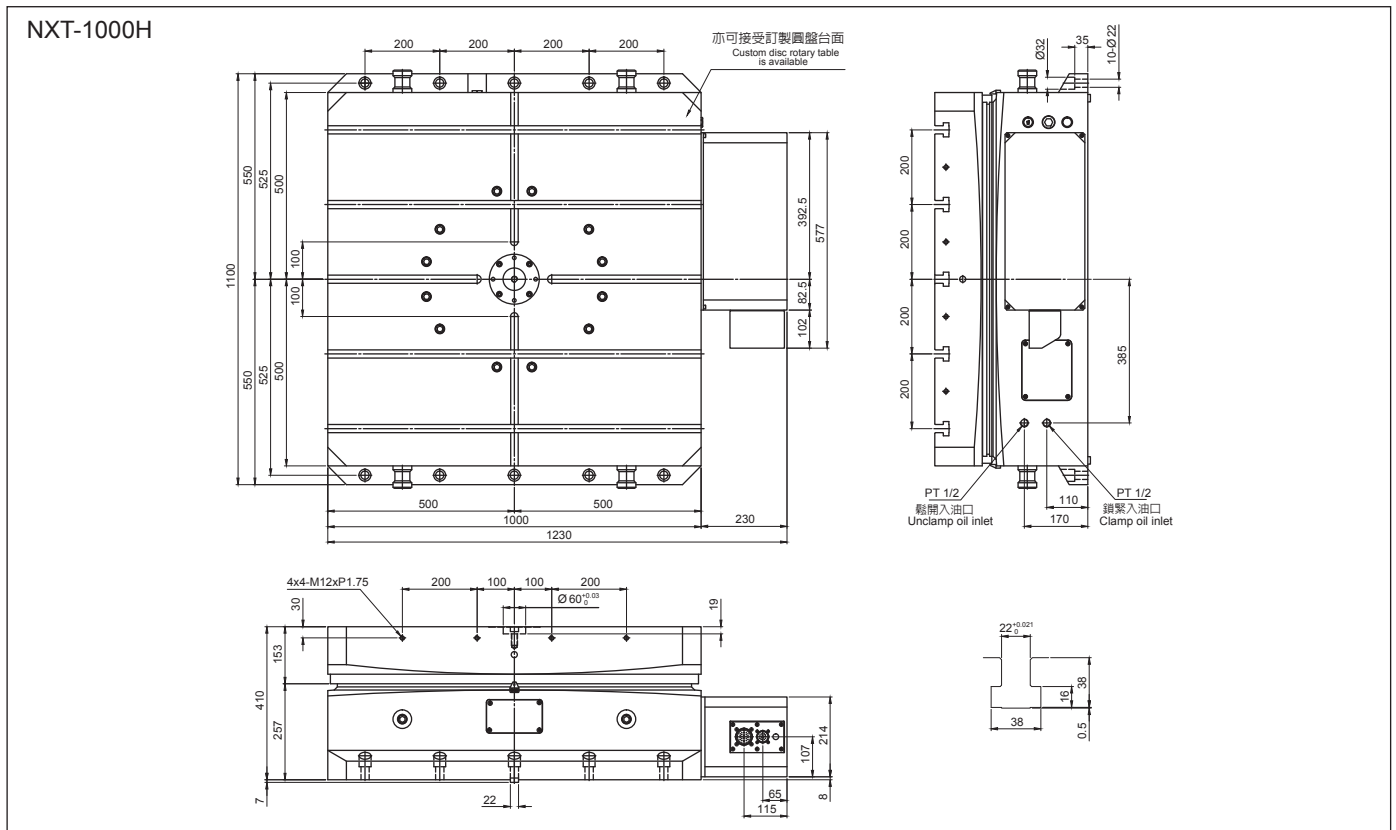
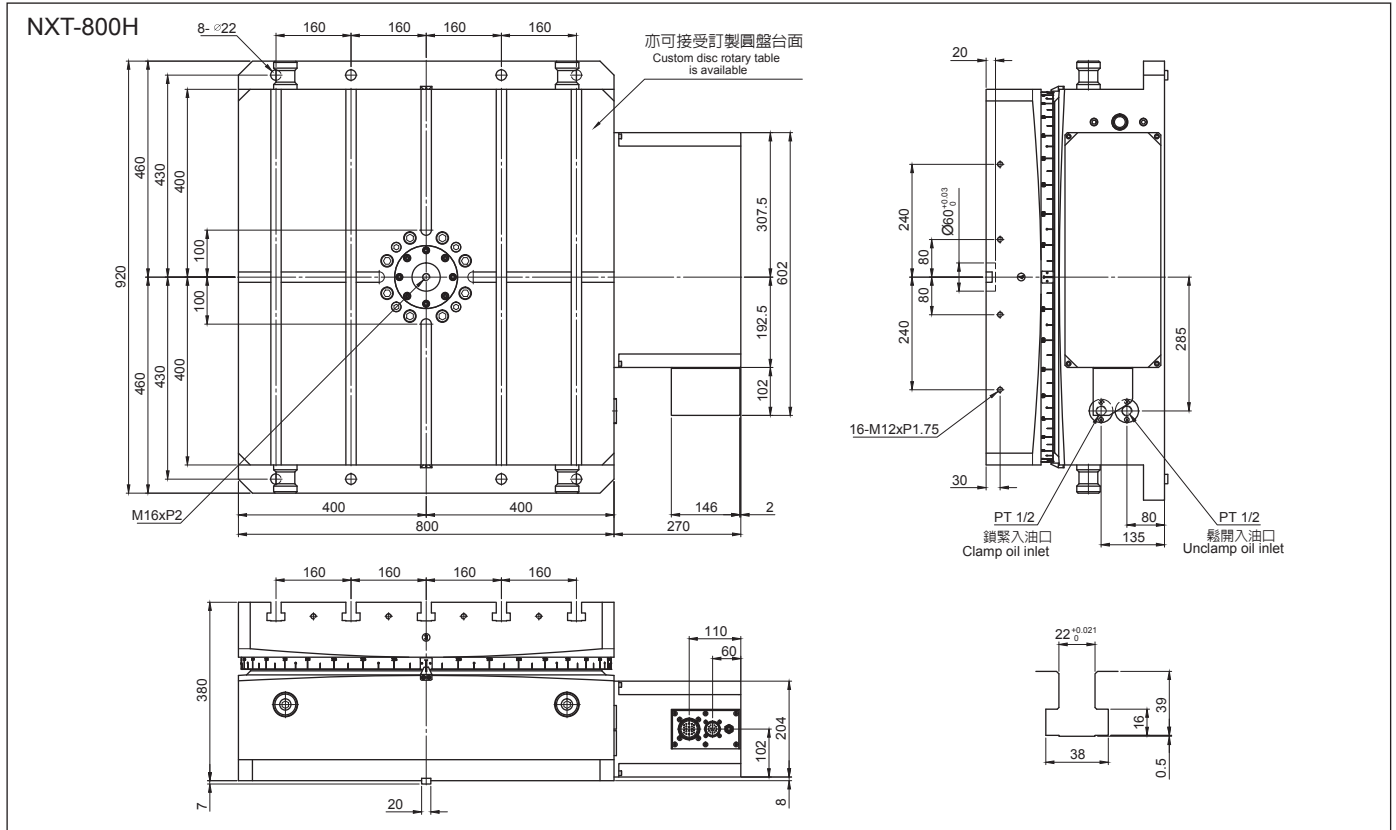




# 5099# 電腦數控齒式分割盤-臥式 CNC Hydraulic Coupling Gear Indexer Horizontal Type

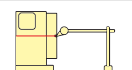
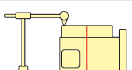
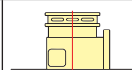
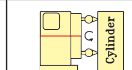
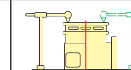

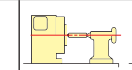



# 5099# 電腦數控齒式分割盤-臥式 CNC Hydraulic Coupling Gear Indexer Horizontal Type

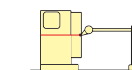

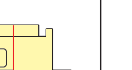
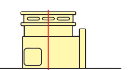




## 標準精度檢驗項目 Accuracy Standard

項次 No.	檢驗項目 Inspection Items
1	基準中心旋轉偏擺 Runout of center bore
2	盤面旋轉起伏 Runout of Table top
3	盤面真平度 Flatness of table top
4	盤面與底座垂直度 Perpendicularity of table top to frame bottom
5	盤面與底座平行度 Parallelism of table top to frame bottom
6	盤面與底座基準導塊垂直度 Perpendicularity of table top to guide blocks at table bottom
7	轉盤與尾座基準導塊平行度 Parallelism between bottom guide block & center height of rotory table to tailstock
8	轉盤與尾座中心高平行度 Parallelism of center line between rotary table and tailstock
9	分割精度(光學儀器測量) Indexing accuracy (arc sec) -- measured by an optical measuring device

型式 Model	1	2	3	4	5	6	7	8
								
NXT-250R	0.01	0.01	0.015	0.02	0.02	0.02	0.02	0.02
NXT-320RV	0.01	0.01	0.015	0.02	0.02	0.02	0.02	0.02
NXT-400RV	0.01	0.01	0.015	0.02	0.02	0.02	0.02	0.02
NXT-500RV	0.01	0.015	0.015	0.02	0.02	0.02	0.02	0.02

項次 No.	檢驗項目 Inspection Items
1	基準中心旋轉偏擺 Runout of center bore
2	盤面旋轉起伏 Runout of Table top
3	盤面真平度 Flatness of table top
4	盤面與底座平行度 Parallelism of table top to frame bottom
5	盤面側基準面與底座垂直度 Perpendicularity of table profile base plane to frame bottom
6	盤面側基準面與基準導塊平行度 Parallelism of center line between table profile base plane and guide blocks
7	分割精度(光學儀器測量) Indexing accuracy (arc sec) -- measured by an optical measuring device

型式 Model	1	2	3	4	5	6
						
NXT-250H	0.01	0.01	0.015	0.015	0.015	0.015
NXT-380H	0.01	0.01	0.015	0.015	0.015	0.015
NXT-500H	0.01	0.01	0.015	0.015	0.015	0.015
NXT-630H	0.01	0.015	0.02	0.02	0.02	0.02
NXT-800H	0.01	0.015	0.02	0.02	0.02	0.02
NXT-1000H	0.01	0.02	0.03	0.03	0.03	0.02