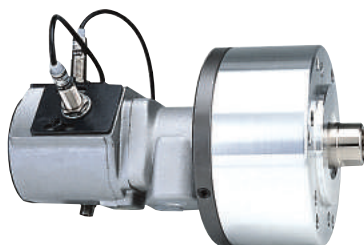
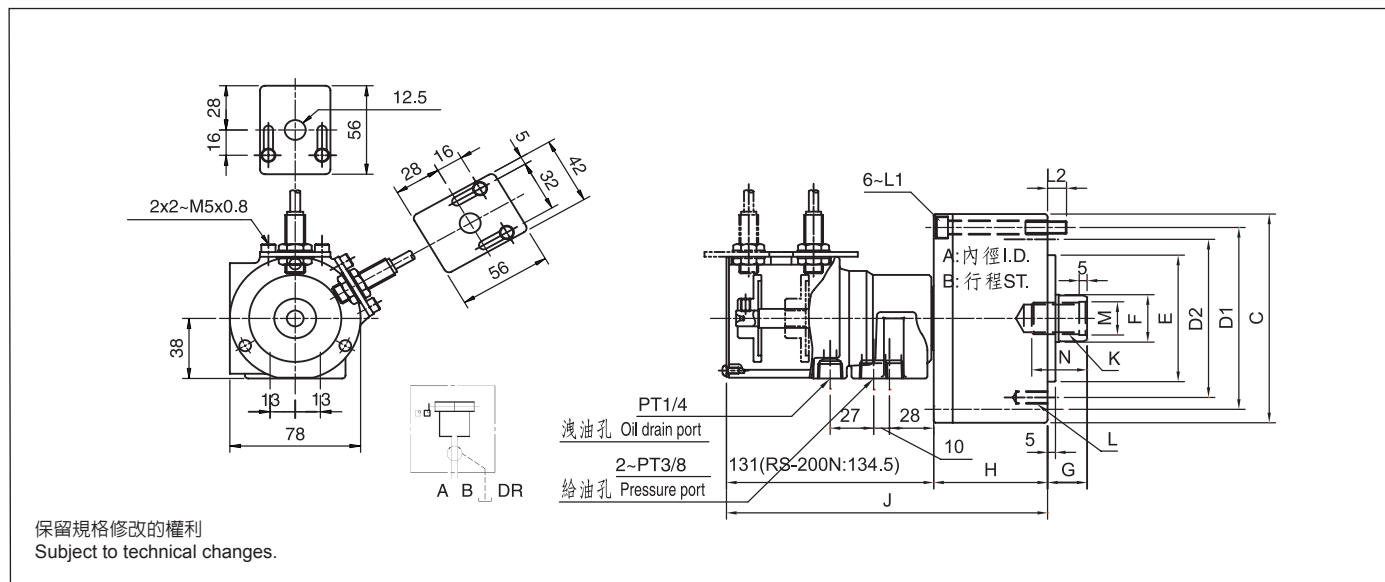


5062# 行程控制型迴轉油壓缸 Rotating Hydraulic Cylinder With Stroke Control



- 短型，高速，行程控制型迴轉油壓缸。
- 感應式近接開關，行程調整容易，可確認油壓缸正確作動。
- 安裝時可由後端鎖固之。
- For short form, high speed and stroke control.
- To ensure safe power chuck operations by conforming movement of the cylinder.
- Can screw it from the rear end of the cylinder when mounting.
- 洩氣孔配管務必單獨接回油壓槽，以避免產生背壓。
- The drain port should be independently connected to oil tank to avoid back pressure.



近接開關型式：

Proximity sensor : Model TL×-12N02E1-C(KFPS) DC 12~24V 200mA NPN

規格 Spec. 型號 Model.	活塞面積 Eff. piston area cm ²		行程 mm Jaw stroke	最高迴轉 mm ⁻¹ (r.p.m) Max. speed	最高使用壓力 Mpa Max. Pressure (kgf/cm ²)	GD ² kg-cm ² Moment of inertia	重量 kg Weight	價格
	押側 Extend	拉側 Retract						
RS-6520N	32.0	28.3	20	6000	4.0 (40)	0.01	3.2	
RS-6530N	32.0	28.3	30			0.01	3.3	
RS-75N	43.0	37.1	15			0.01	3.3	
RS-7530N	43.0	37.1	30			0.013	3.7	
RS-100N	77.4	71.5	20	5500	4.0 (40)	0.04	4.8	
RS-125N	121.6	113.1	25			0.05	7.3	
RS-150N	178.6	160.8	30			0.16	10.6	
RS-200N	313.0	290.4	35			0.29	15.9	

寸法 Size 型號 Model.	A	B	C	D1	D2	E _(H7)	F	G		H	J	K	L	L1	L2	M _(H8)	U
								max.	min.								
RS-6520N	65	20	97	80	80	60	25	45	25	62	193	M16×2.0	6~M8×16	M6×70	14.5	17	30
RS-6530N	65	30	97	80	80	60	25	45	15	62	203	M16×2.0	6~M8×16	M6×80	14.5	17	30
RS-75N	75	15	107	90	90	65	30	45	30	57	188	M20×2.5	6~M8×16	M8×60	12	21	35
RS-7530N	75	30	107	90	90	65	30	45	15	72	203	M20×2.5	6~M8×16	M8×75	12	21	35
RS-100N	100	20	132	115	100	80	30	45	25	72	203	M20×2.5	6~M10×20	M8×75	12	21	35
RS-125N	125	25	160	140	130	110	35	50	25	82	213	M24×3.0	6~M12×20	M8×85	12	25	45
RS-150N	150	30	190	170	130	110	45	55	25	95	226	M30×3.5	12~M12×24	M10×100	16	31	45
RS-200N	200	35	245	220	145	120	55	75	35	115	249.5	M36×4.0	12~M16×30	M10×125	21	37	60