

5111# TC 螺栓式單動油壓缸 Threaded-Body Single Acting Hydraulic Cylinder

產品簡介

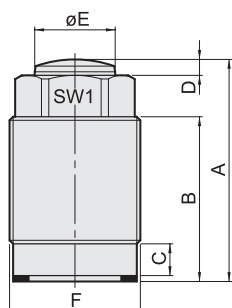
- 螺栓式單動油壓缸採用進口油封及零件，高壓夾持中保持長時間不漏油。
- 螺栓式單動油壓缸體積小，使用於夾具上，能在最小空間中排列使用。
- 此型式油壓缸使用於頂出場合，彈簧退回，無法使用於拉式場合。
- 安裝時頂桿與工件接觸角度請勿大於10°。
- 缸體底部需置放1只鎖緊防漏墊圈。

Product Introduction

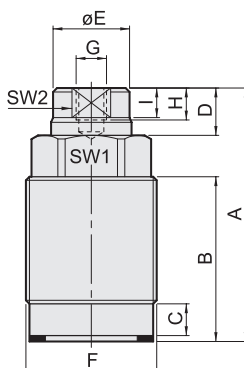
- The threaded body single acting hydraulic cylinder employs imported oil seal and parts to assure quality dependability, which minimizes oil leakage. No oil leakage during high pressure clamping for a long time.
- Compact construction permits several units operated for clamping in a small space.
- This type of hydraulic cylinder is used for ejecting with return by spring, which can not be used for pulling application.
- When installing, keep the contact angle between the rod and workpiece no larger than 10°.
- A leak-proof gasket is required to place under the bottom of cylinder barrel.



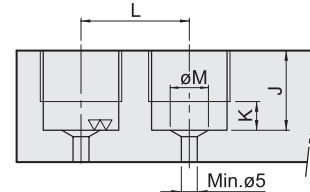
Type:A



Type:B



安裝底座示意圖
Mounting base diagram



Item	Model	TC-12A	TC-16A	TC-20A	TC-25A	TC-12B	TC-16B	TC-20B	TC-25B
頂桿直徑 Rod size	mm	12	16	20	25	12	16	20	25
頂桿行程 Rod stroke	mm	10	12	15	16	10	12	15	16
理論支撐力 Supporting force	100Kg/cm ²	110	200	300	490	110	200	300	490
	500Kg/cm ²	570	1000	1570	2460	570	1000	1570	2460
彈簧回復力量 Spring restoring force	Min Kg	2.5	5	7	12	2.5	5	7	12
最小操作壓力 Min. pressure	Kg/cm ²	10	10	10	10	10	10	10	10
需油量 Oil needed	cc/10mm stroke	1.13	2.01	3.14	4.91	1.13	2.01	3.14	4.91
A		38	46.5	56	59.5	45	52.5	65.5	68.5
B		25	33	42	44.5	25	33	42	44.5
C		7	8	8	11	7	8	8	11
D		3	3.5	4	5	10	9.5	13.5	14
E		φ 12	φ 16	φ 20	φ 25	φ 11	φ 15	φ 19	φ 23
F		M22×1.5	M26×1.5	M30×1.5	M38×1.5	M22×1.5	M26×1.5	M30×1.5	M38×1.5
G		-	-	-	-	M6×1.0	M6×1.0	M8×1.25	M8×1.25
H		-	-	-	-	6	6	8	8
I		-	-	-	-	6.5	5.5	6	7
J	Min/Max	16/24	20/32	24/41	28/44	16/24	20/32	24/41	28/44
K	Max	8	9	9	11	8	9	9	11
L	Min	31	34	40	52	31	34	40	52
M	Min/Max	9/12	12/16	16/24	18/25	9/12	12/16	16/24	18/25
SW1		17	22	24	32	17	22	24	32
SW2		-	-	-	-	10	13	17	19